

## 4K60 4:4:4 1Gbps AV over IP Wall Plate Transceiver



The VPX-TC1-WP2 transceiver wall plate provides one of the most advanced 1G IP Streaming solutions on the market utilizing Aurora's new Mimix™ CODEC technology. Mimix™ compression allows for near perfect reproduction of video and graphic images at resolutions up to 4K60 4:4:4 over 1G networks. It has zero frame (1.78ms) of latency and seamless switching for fast lag free content.

### Features:

- 4K60 4:4:4 UHD 120m over 1G CAT 5e
- Zero Frame Latency (1.78ms)
- HDR10, HDR10+, Dolby Vision
- LPCM up to 12-channels, Dolby Digital Plus, Dolby TrueHD DTS HD Master Audio, Dolby ATMOS
- 12 bits color depth processing, 16bits OSD
- Enterprise Security (AES 256, 802.1x, HTTPS, & SSH)
- Seamless Switching, Video Wall and Image Rotation
- EPG & Channel Mapping
- MJPEG Preview up to 720p30
- 1 HDMI Inputs, 1 USB-C Video/Data
- USB 2.0 Type A
- Line In/Out on Rear for Add-on Audio Wall Plates
- 1G LAN PoE
- RS-232 Serial Port
- Integrated Web Server for Configuration
- Dante® 2/8 Ch Audio License Options & Dante Controller
- Low Power at 8 Watts
- 2 Gang Mounting Available in White and Black

Power consumption is important as the VPX-TC1-WP2 uses as little as 8 watts. It does this with in a small form factor saving a lot of money in utility bills as it uses 1/3 the power of comparable systems.

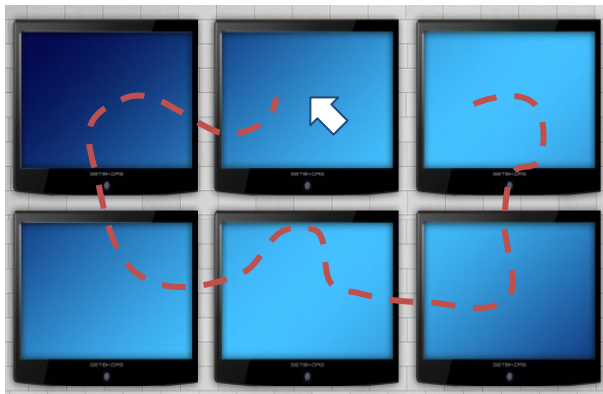
Audio, video, data, and control can be sent securely to one or many units using off-the-shelf 1G RJ-45 Ethernet switch. The 2 video inputs can be selected from the buttons, auto sense, or IP command. The audio can be de-embedded at any location, and/or be sent to or received from a Dante® enabled device. The USB is also flexible, working as a KVM and/or a high-speed data transfer for memory sticks & another port just for cameras. Together with the VPX-TC1 Pro box version, the possibilities are nearly limitless and scalable.

Digital signage, education, corporate, and residential are just a few markets which benefit from the flexibility and low cost of the VPX-TC1-WP2.

## Videowall with Image Rotation



## KVM Roaming Feature One Set of Keyboard/Mouse Controls All PCs



## Technical Specifications:

Model Name	VPX-TC1-WP2
<b>Technical</b>	
Compression	Mimix™ 13:1
Latency	0 Frames (1.78ms)
Video Inputs	1 HDMI 2.0b, 1 USB-C
Encryption	HDCP 2.3 & AES 256
Audio Analog	Stereo Line In/Out (3.5mm TRS)
1G Ethernet	RJ-45 and SFP
LAN	RJ-45 10/100/1000M PoE
Video Bandwidth	600MHz
Video Support	Up to 4K2K 4:4:4 @ 60Hz
Audio Support	Up to 12 Channels
Video Stream Bandwidth	93Mbps – 850Mbps (4K60 4:4:4) Packet Size Under 1600 1Gbps with USB and Audio
USB Bandwidth	200Mbps (Camera) 170Mbps (HID/Mass Storage Devices)
RS-232	Up to 115k Baud (3.5mm TRS)
IR	Bi-Directional (3.5mm TRS)
USB Connector	1 USB 2.0 Type A & 1 USB 2.0 Type-C
Options	Dante® 2Ch/8Ch
Interface	IR or Keyboard via OSD, Web Server
<b>Mechanical</b>	
Housing	Aluminum Enclosure
Dimensions (L x W x H)	3.728" x 2.83" (4.331" with tabs) x 1.404"
Weight	2.5lbs (1.13g)
Mounting	2 Gang Decora Style
Power Supply	48v DC (2 Pin Euro) or PoE (LAN)
Power Consumption	6.4 Watts, up to 12.9 Watts with USB
Operation Temperature	0~40° C [32~104° F]
Storage Temperature	-20~60° C [-4~140° F]
Relative Humidity	20~90% RH [No Condensation]
<b>Package Contents</b>	VPX-TC1-WP2

**Note: Specifications subject to change without notice.**

Dante AV-A™