



Logo Insertion, Crawls and more over Live Video
In High Definition or Standard Definition, Analog or SDI

THE CHYTV GROUP



Features

- Easy to learn and use
- High quality text and graphics
- Unlimited animated logos on screen
- Design and create layouts
- Import / Export / Save / Recall libraries
- Manage and Edit resources
- Organize streams of data to fields, tickers and crawls
- Playback a wide variety of logos, clips, snipes, text and graphic images
- Process automation commands
- Up to 10 crawl tickers on screen.
- Time-line control
- Preview on VGA screen
- Background combiner and graphic restyling tools
- Unlimited storage capacity
- 10 bit digital quality
- Analog, SD and HD standards
- Includes rack-mount kit

Ideal for Use In:

Digital Signage, College and High School sports and live events, News Studios, Remote Production Trucks, Live Control Rooms, Master Control Rooms

Logo Insertion and Channel Branding

LogoIt! is a very efficient, high performance logo insertion system that will help you create your company or channel ID and branding look at a very attractive price. From simple static logos, to complex pages of graphics, logos, text and tickers; LogoIt! is all you need to achieve that new creative look.

Clear and Easy To Use Interface

LogoIt! Is a combination of Windows based software and reliable hardware that provides a comprehensive set of tools to create, manage, and playback a wide variety of logos, text and graphic images. Commands are available to size and position any logo or graphic element on the screen and save for future recall. Saved logos are displayed in the provided asset browser allowing the operator to recall logos by clicking on the graphic or by recalling using the supplied dedicated control panel. Designed to make the operator's life easy, LogoIt!'s simple to use interface minimizes the chances of on-air mistakes.

Text and Tickers

What sets LogoIt! apart from other systems is the ability to add text and automated multiple static fields and/or multiple crawl tickers *with interpolated static or animated graphic elements* to your on air station identification, or other logos. Text elements can be used in conjunction with other graphics or by themselves. Fonts, colors, speed, speed changes, segment separators (static or animated) can be adjusted independently for each ticker line. Tickers provide a way to automatically update onscreen text with data coming into LogoIt! from either Ethernet or RS232 connections. *Analog and Digital clocks*, up and down counters, SMS messages, temperature are just some examples of how this function could be used.

Background Combiner and Restyling Tools

Your graphics artist will appreciate the ability to create 32-bit transparent logos and/or backgrounds, using the standard video capture feature. Once images are captured they are available on the network so they can be shared with other workstations in the graphics department. Software tools are provided to convert pairs of 24bit graphics files and create valid 32bit logos. Any SDI source connected to the LogoIt! video input can provide the fill and key required. The Background Combiner will match them together to create a 32 bit graphics file ready to be used as a logo or background. The Restyling Tools complement the combiner with graphics processing, painting and editing capability.



LOGOIt!

chytv.com
631.845.2152

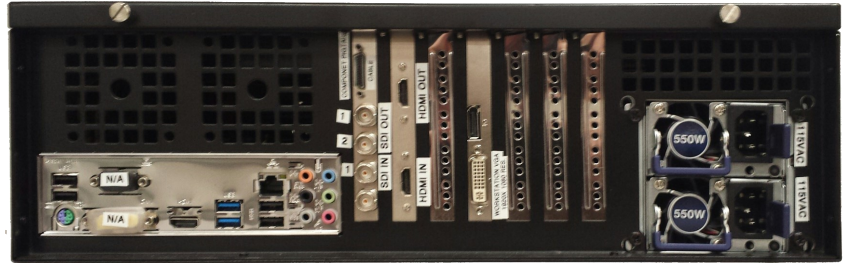


ChyTV / Digit Logolt!

Video Graphics Information Display

Technical Specifications

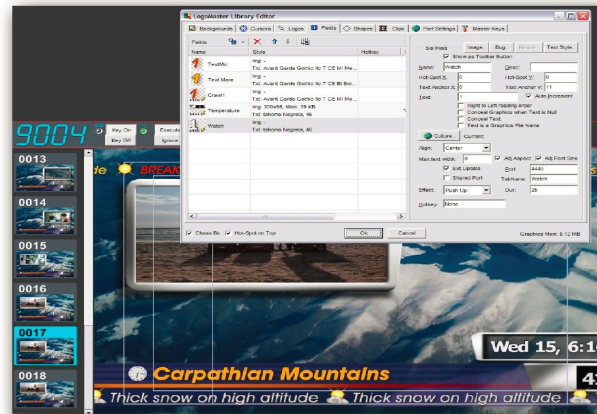
Dimensions (WxHxD)	422 x 137 x 391 mm 16.625" x 5.375" x 15.375"
Processor Chipset	Intel Core i5/i7, Celeron Intel HM65
System Memory	4GB DDR3 SO-DIMM x2
Storage	160GB SATA 2.5" SSD/HDD
Ethernet Controller	Intel 82574L x2
Graphic Controller	Intel integrated HD graphic engine
Audio Controller	Realtek ALC886
LAN	RJ45 10/100/1000Mbps x2
Display	HDMI x1 , DVI-D x1 , VGA x1 VGA+HDMI, VGA+DVI
Audio	Phone Jack x2 for Mic-In and Line-Out
Serial I/O	DB9 x2 for RS232/422/485
Digital I/O	DB9 Female x1 for DI x4 & DO x4 (TTL, DO Max 100mA)
USB	2.0 Type A x6
Power Input	Terminal Block 2-pin
Expansion	Mini-PCIe x1 with SIM card reader Mini-PCIe x1 PCI x 2 or PCIe (x1) x1
Power Input	+9~+30V Input, Support ATX Function
Hardware Monitor	Fintek F81865 integrated Watchdog Timer 1~255 level
OS Support	Windows 7 Professional
Certifications	CE, FCC Class A



Digit Logolt!

Video Inputs / Outputs

SDI Video Input	2 x 10-bit SD/HD/2K and 2D/3D switchable. Supports 3 Gb/s single link 4:2:2/4:4:4 and dual link 4:2:2/4:4:4.
SDI Video Output	2 x 10-bit SD/HD/2K and 2D/3D switchable. Supports 3 Gb/s single link 4:2:2/4:4:4 and dual link 4:2:2/4:4:4.
Analog Video Input	1 x Component YUV on 3 BNCs switchable to S-Video or Composite. Component supports HD and SD.
Analog Video Output	1 x Component YUV on 3 BNCs switchable to S-Video and Composite. Component supports HD and SD.
HDMI Video Input	1 x HDMI type A connector
HDMI Video Output	1 x HDMI type A connector
Analog Audio Input	2 Channels of professional balanced analog audio via XLR connectors.
Analog Audio Output	2 Channels of professional balanced analog audio via XLR connectors.



Models	Part #
ChyTV-Logolt	7A02013

Web: www.ChyTV.com
Email: sales@chytv.net
Phone: 631 845 3880

