

# MY CUSTOM SHOP HINGED PANELS: 12X-1-H, 24X-H (UNLOADED)

My Custom Shop Hinged Rack Panels are 1RU and 2 RU pre-punched hinged panels for D-series connectors. The 12X-1-H and 24X-H allow for easy access to the rear of the panel after installation while the lacing bar helps with cable organization, and strain relief. Proudly built in our USA facility.

## Features:

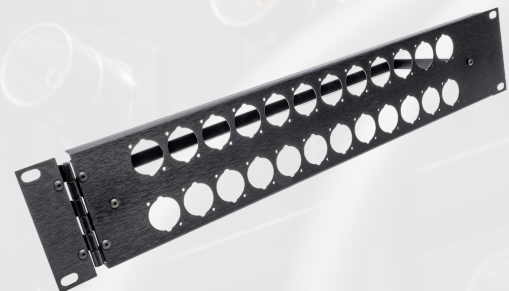
- Flanged panels for added Strength
- Hinged for easy access to rear of panel
- 4" lacing bar to help with cable management and strain relief
- 12 or 24 D-Series Punched holes
- Hardware for D-Series Chassis connectors included

## Specifications:

- **Sizes:** 1RU, 2RU
- **Ports:** 12, 24
- **Dimensions:**
  - **1RU 12 Port:** 19in (482.6mm) x 1.75in (44.45mm)
  - **2RU 24 Port:** 19in (482.6mm) x 3.50in (88.9mm)
- **Cutouts:** D-Series
- **Panel Material:** 1/16" Black Anodized Aluminum
- 4-40 tapped mounting holes, 4-40 x 3/8" flat head Phillips screws



**1RU, 12 Port**  
**Dimensions:** 19in (482.6mm)  
x 1.75in (44.45mm)



**2RU, 24 Port**  
**Dimensions:** 19in (482.6mm)  
x 3.50in (88.9mm)